

A close-up photograph of a person's hand, wearing a red and black plaid shirt, gently touching a green plant in a field. The background is a soft-focus landscape with a bright sky.

Tessengerlo Group

Every Molecule Counts

Importance of Albertkanaal for TKI

Joeri Peeters

26/2/24



Tessengerlo Group
EVERY MOLECULE COUNTS

What are we talking about

- Brief Company Introduction
- TKI Product Flows
- Logistics Flows Overview
- Importance of Albertkanaal for Tessenderlo Group / link Antwerp harbour
- Interventions Plan
- Conclusions



About Tessenderlo Group

With a history that dates back to 1919, the group has evolved over recent years from a chemical company into a **diversified industrial group** that focuses on agriculture, valorizing bio-residuals, machinery, mechanical engineering, electronics, energy, and providing industrial solutions with a focus on water.

www.tessenderlo.com



+100

locations in
more than
25 countries



+7,000

employees



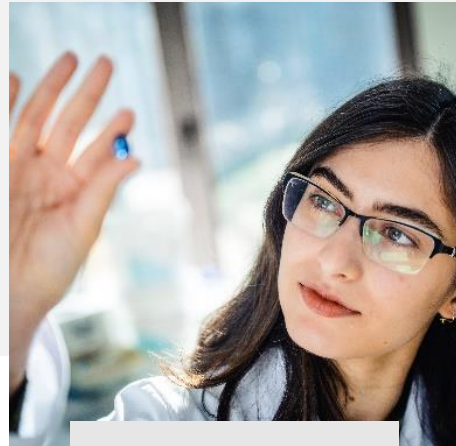
3.3

billion EUR
revenue in
2022

Company Introduction : Five operating segments



Agro



Bio-valorization



Industrial Solutions



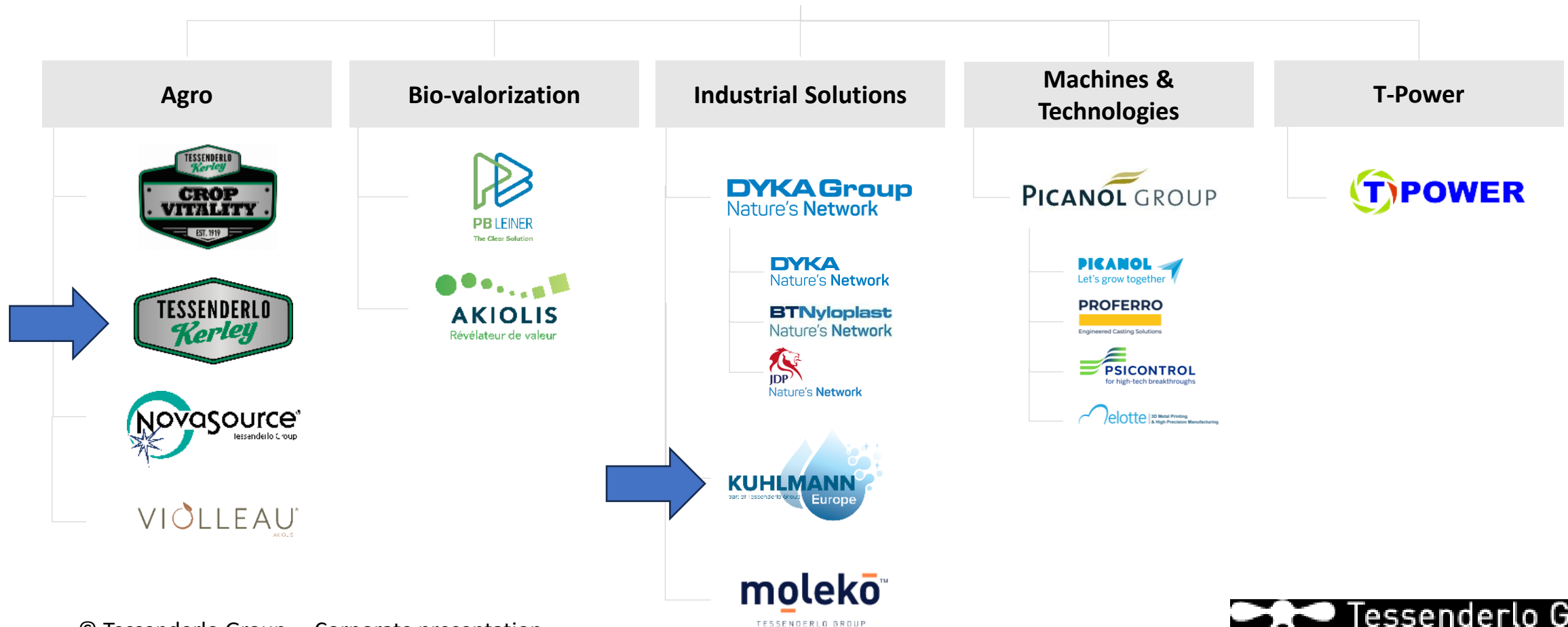
Machines & Technologies



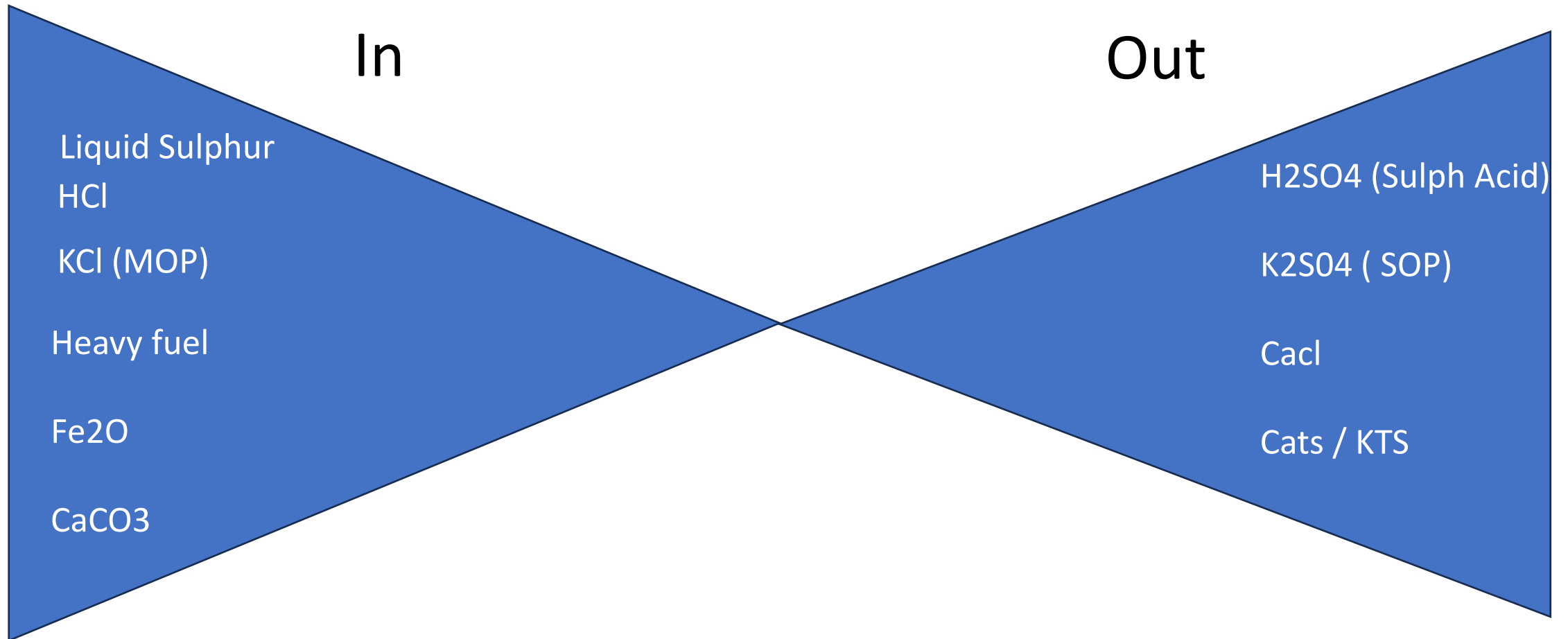
T-Power







Company Introduction: Our segments and business units



TKH Product Flows



Logistics Flows Per Transport Mode – TKH site

TRANSPORT (no pipeline)		IN (ton)		OUT (ton)		Σ (ton)	
	Truck	51 615	9,9%	299 711	40,5%	351 326	27,9%
	Rail	-	0,0%	4 940	0,7%	4 940	0,4%
	Bulk vessel/barge	469 485	90,1%	224 159	30,3%	693 644	55,0%
	Container vessel/barge	-	0,0%	210 927	28,5%	210 927	16,7%
		521 100		739 737		1 260 837	

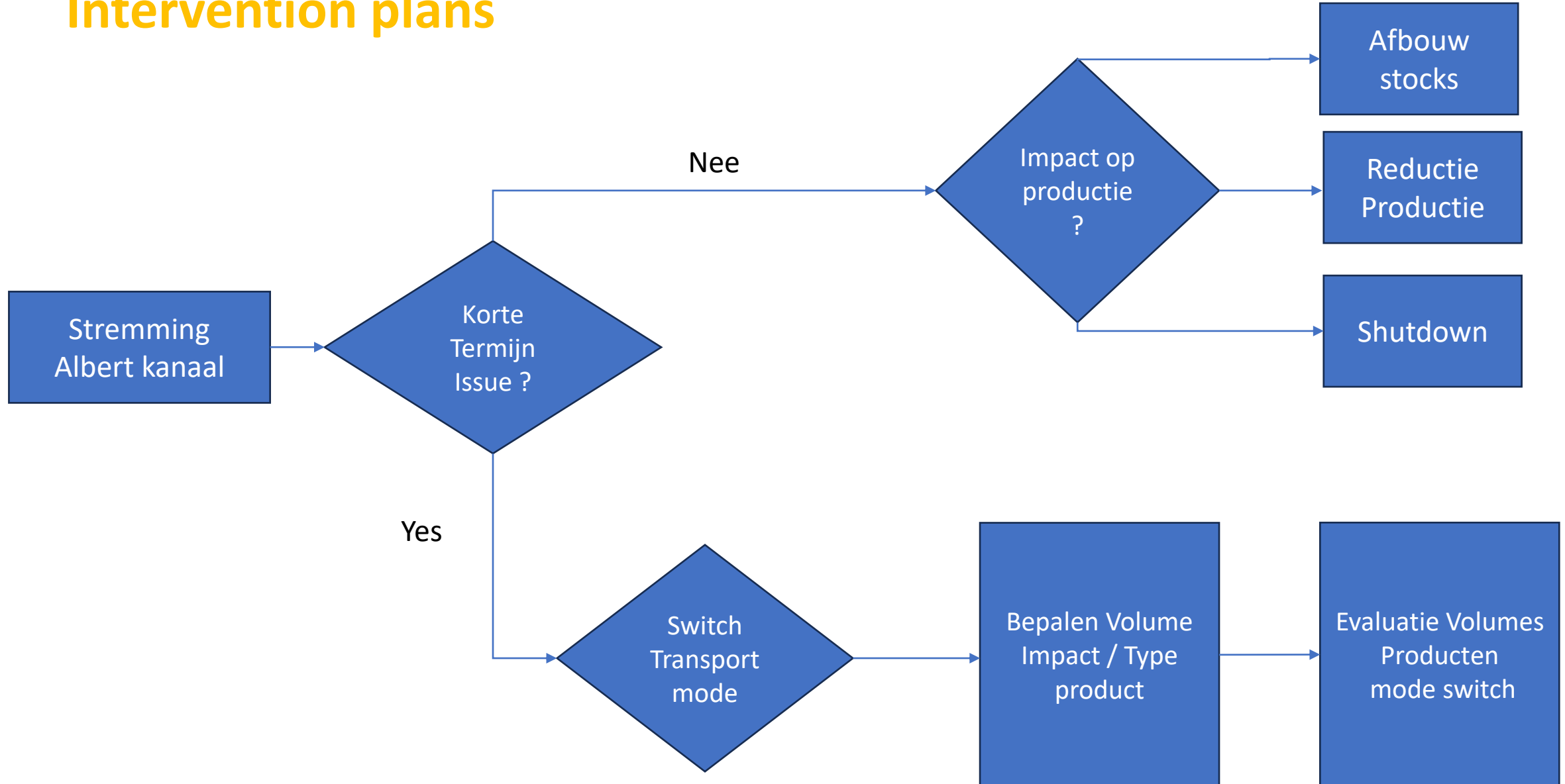
72 %

On top of above 33% of overall volume is shipped via pipeline (630kT)

Albertkanaal ... Vital Life Line for TKI

- Continuous production 24/7
- Limited Stocks on-site
- Local Stocks versus Remote Harbour Oriented stocks(Euroports)
 - Dry Bulk
 - Liquid Bulk
- **90% of all raw materials** are supplied by **barge** (excluding pipeline)
- 70% of all volumes (IN/OUT) are waterbound

Intervention plans



Conclusions:

- 3-4 days without supply is maximum time-lap before moving into shutdown
- Highest cost / risk incurred due to installation shutdown & restart
Minimum cost impact of **250 K€ /day**
- Chemical industry is **clustered** – Linked with multiple Companies due to **Captive Use** ;
eg. Link Tessenderlo – Vynova : Domino effect of HCl shortage
- Dangerous goods (Seveso): difficult to move storage from site to external storage facilities
- Complete modal shift as temporary back-up impossible due to extreme high volumes