



Enabling Defense Mobility



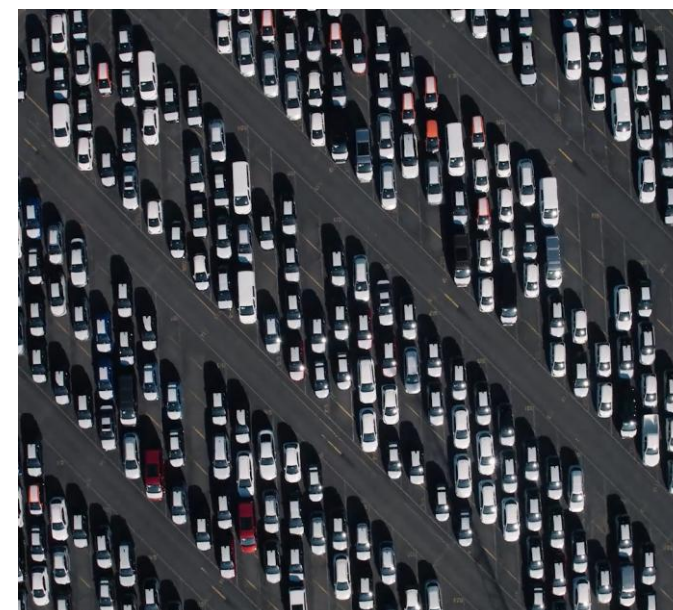
ICO : Facts & Figures



100% subsidiary of NYK



**2500 vessels/ year
2,35 million cars
300,000 t breakbulk**



**3,75 million m² terminal
12 hectares of flexible capacity
for Defense operations**



**11 windturbines (44Mw)
+ investment in onshore power**



**Multimodal connectivity via
sea, train, road and inland
waterways..**



**Located in 2 Belgian ports:
Zeebrugge and Antwerp**



**1250 dedicated experts
(incl. dockworkers)**



90 years of experience

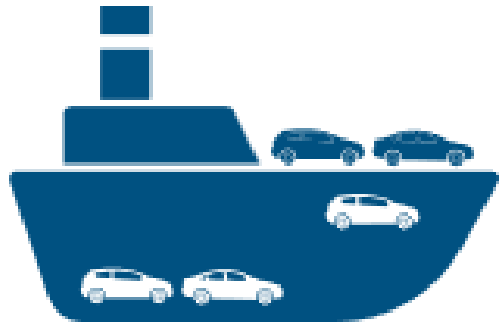


Army reservists



**350+ charging points
Sophisticated IT infrastructure**

Core Business



Ship handling



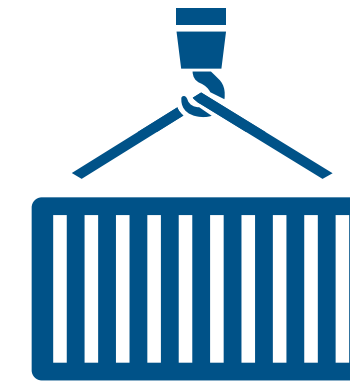
**Terminal
Handling**



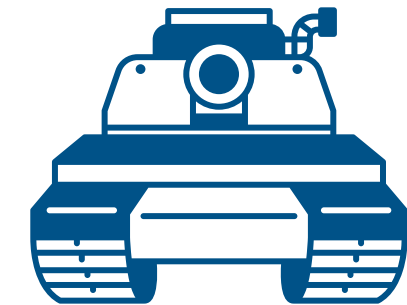
**Vehicle
processing**



**Agency
Customs &
logistics**



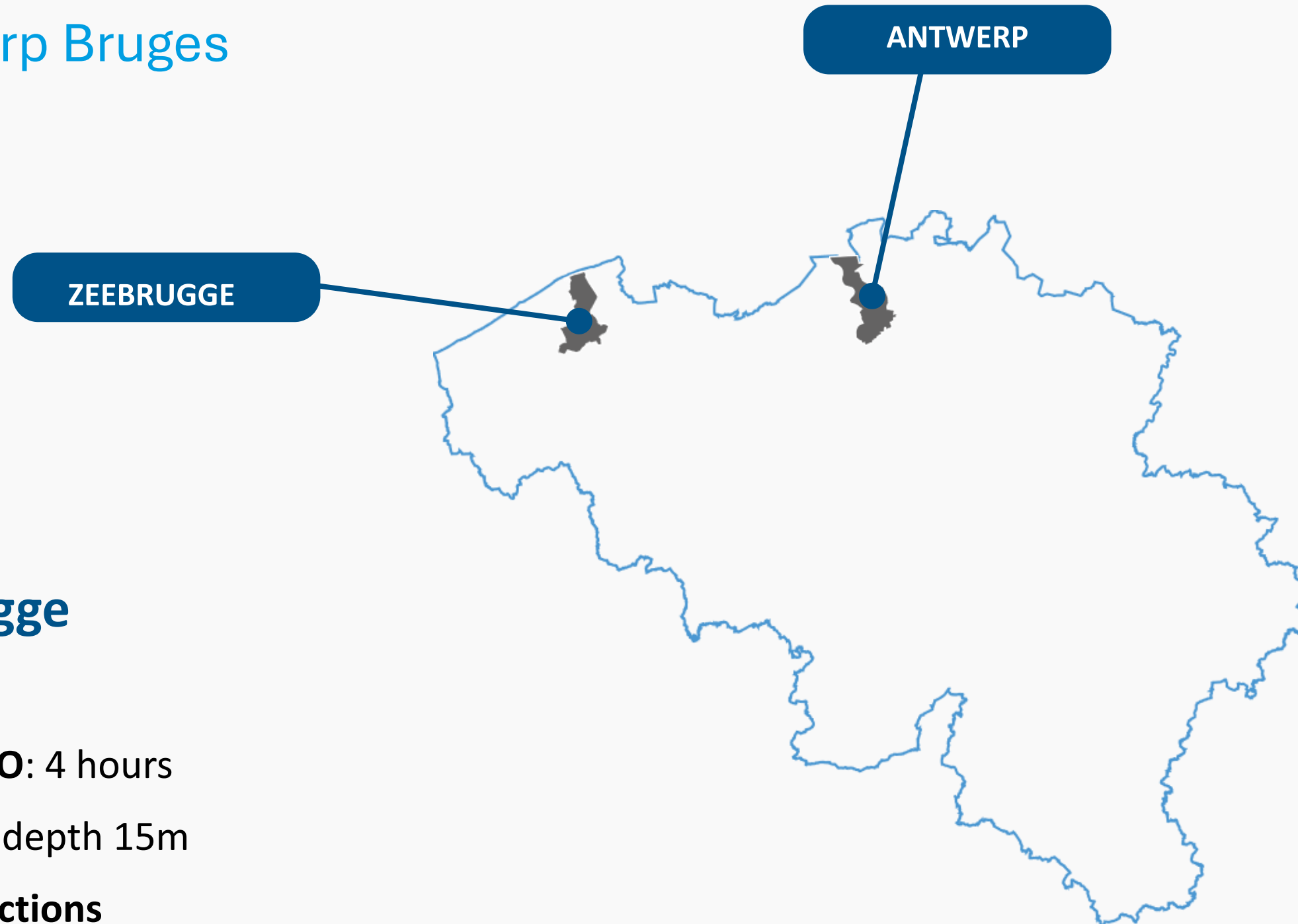
**General Cargo
& Projects**



**Army
Operations**

Strategic location

Port of Antwerp Bruges



Port of Zeebrugge

- **Operations:** 24/7
- **Pilot station to ICO:** 4 hours
- **Lock:** 500x57 m – depth 15m
- **No air draft restrictions**

Port of Antwerpen

- **Operations:** 24/7
- **Pilot station to ICO:** 8 hours
- **Lock:** 500x68 m – depth 15m
- **No air draft restrictions**

Strategic location

ICO Terminals



Southern Inlet Terminal, Zeebrugge

- **Surface:** 1,7 mill m² (170ha)
- **Quay length:** 4650 m
- **Berths:** 16
Deapsea/Shortsea – RoRo/LoLo
- **Water depth:** 13,5 m (non-tidal)
- **Rail:** 8 tracks



Northern Inlet Terminal, Zeebrugge

- **Surface:** 800,000 m² (80 ha)
- **Quay length:** 1085 m
- **Berths:** 4
Deapsea/Shortsea – RoRo/LoLo
- **Water depth:** 13,5 m (non-tidal)
- **Rail:** 8 tracks

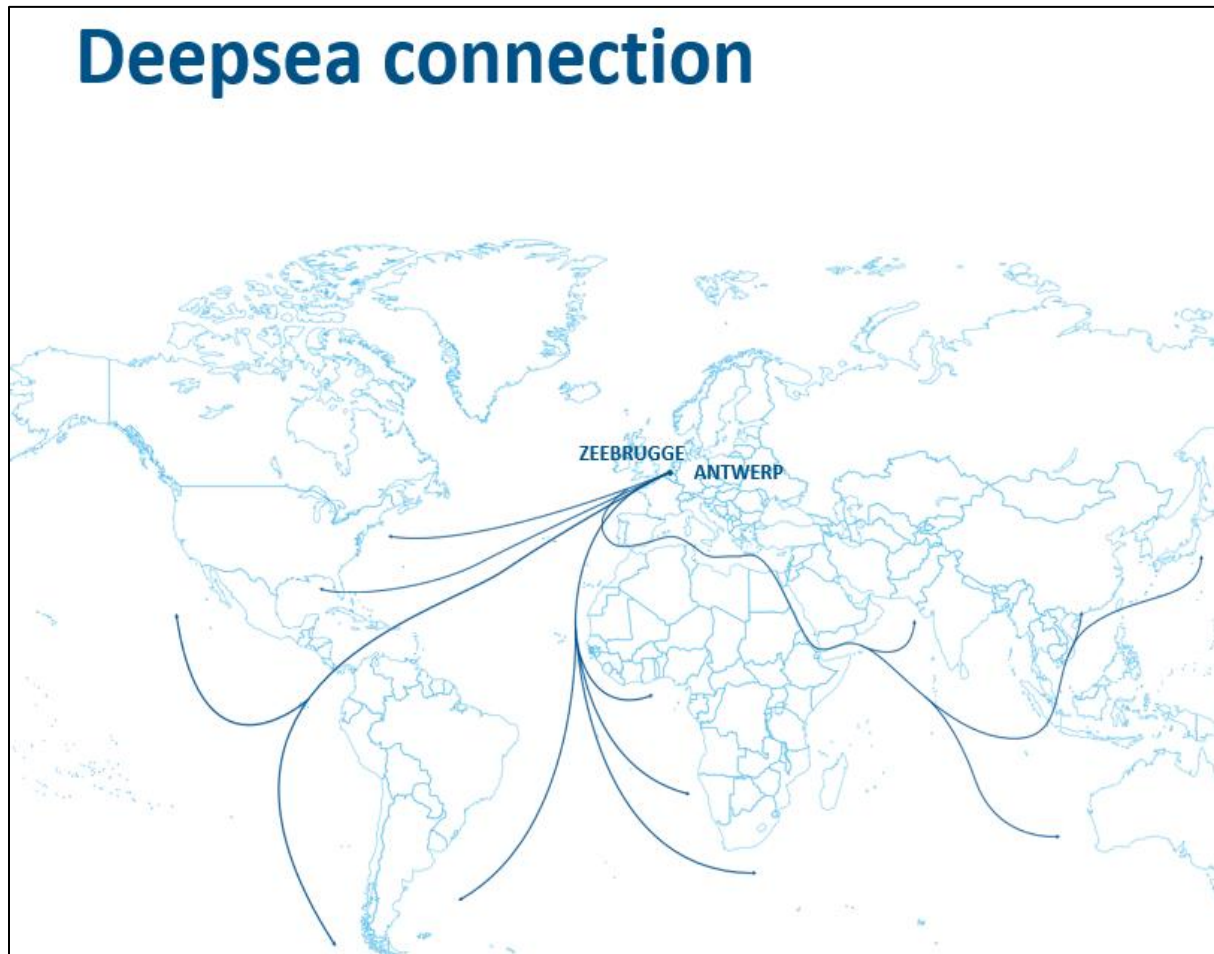


Vrasene Terminal, Antwerp

- **Surface:** 1,25 mill m² (125 ha)
- **Quay length:** 3,150 m
- **Berths:** 5
Deapsea/Shortsea – RoRo/LoLo
- **Water depth:** 13,5 m (non-tidal)
- **Rail:** 6 tracks

Extremely well connected

Deepsea connection



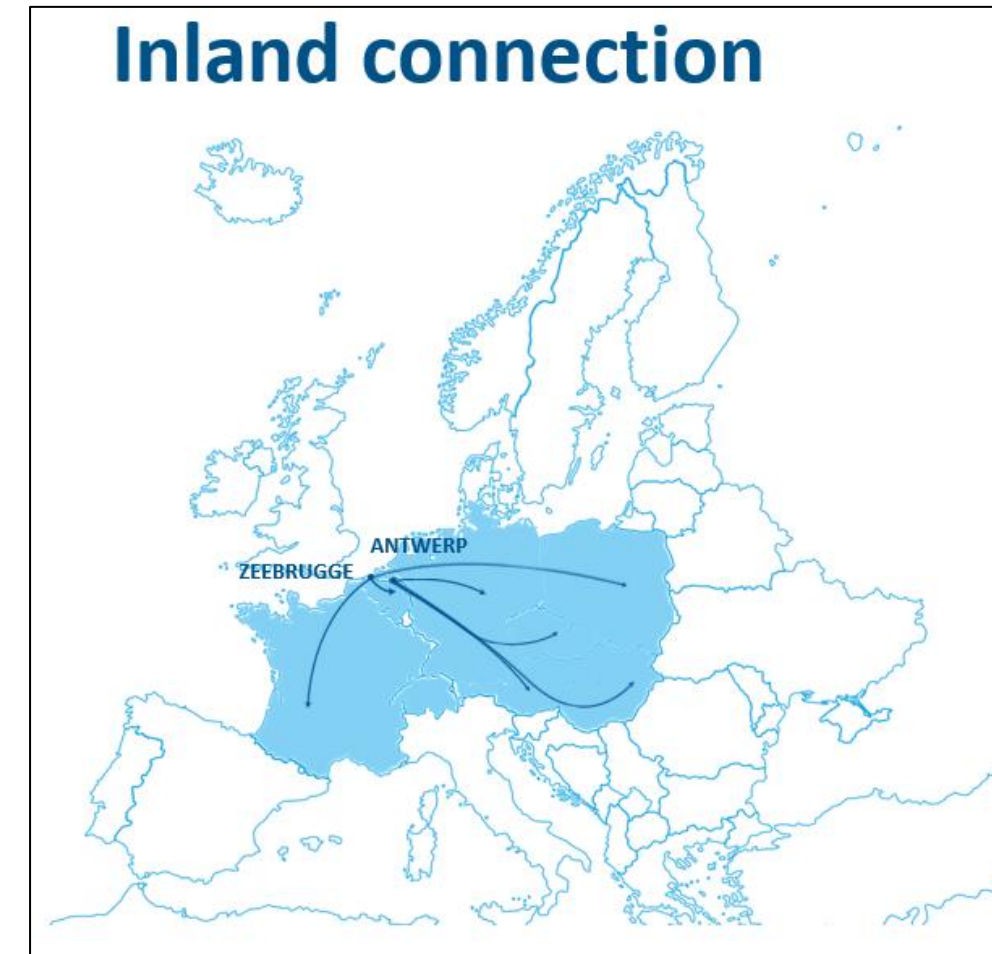
- Connected to 150 deepsea ports
- Fixed liner services
- Non-liner or tramp services
- RoRo and LoLo

Shortsea connection



- Connected to 50 shortsea ports
- Fixed liner services
- Coaster operations
- Non-liner or tramp services
- RoRo and LoLo

Inland connection



- Connected to mainland Europe
- Via rail
- Via road
- Via inland waterways
- Close to international airports

ICO – Barcelona



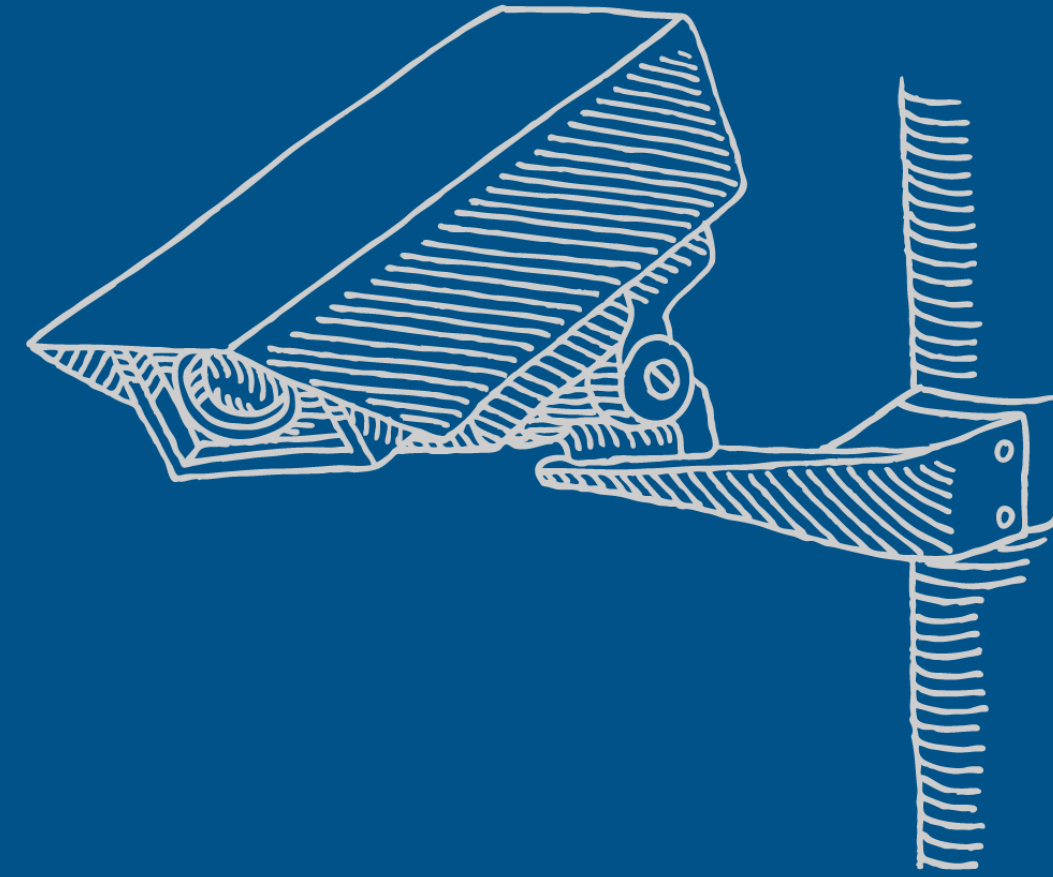
Advantages of the port of Barcelona

- Location at the economic center of Spain
- Ship/Rail/Truck interconnection between European ICO-terminals
- Hub and spoke potential with strong deep sea - short sea connection
- Vessels can make quick turn-arounds in EU by stopping in Med vs. North Continent (saving abt 10-14 days impact)

Reliability first

Certified, monitored, and trusted by defense partners

- ISPS-certified terminals
- 24/7 surveillance and secure access
- Temporary military zones with highest security standards
- Experienced staff trained in military-grade safety protocols
- Flexible scaling up or down
- Cyber security certified





All-in support, tailored to every mission

ICO goes beyond operational support

- **Temporary Military Zones:** Staging area (up to 12ha),
Accommodation and resting facilities
Command post
Catering
Sanitation
Medical facilities
Energy
ICT
Dedicated security and dedicated access for military
- **Tailored terminal and logistic solutions** for each operation
- **Support** from planning to deployment

ICO adapts to your mission – not the other way around.

Inland Waterways – breakbulk Operations



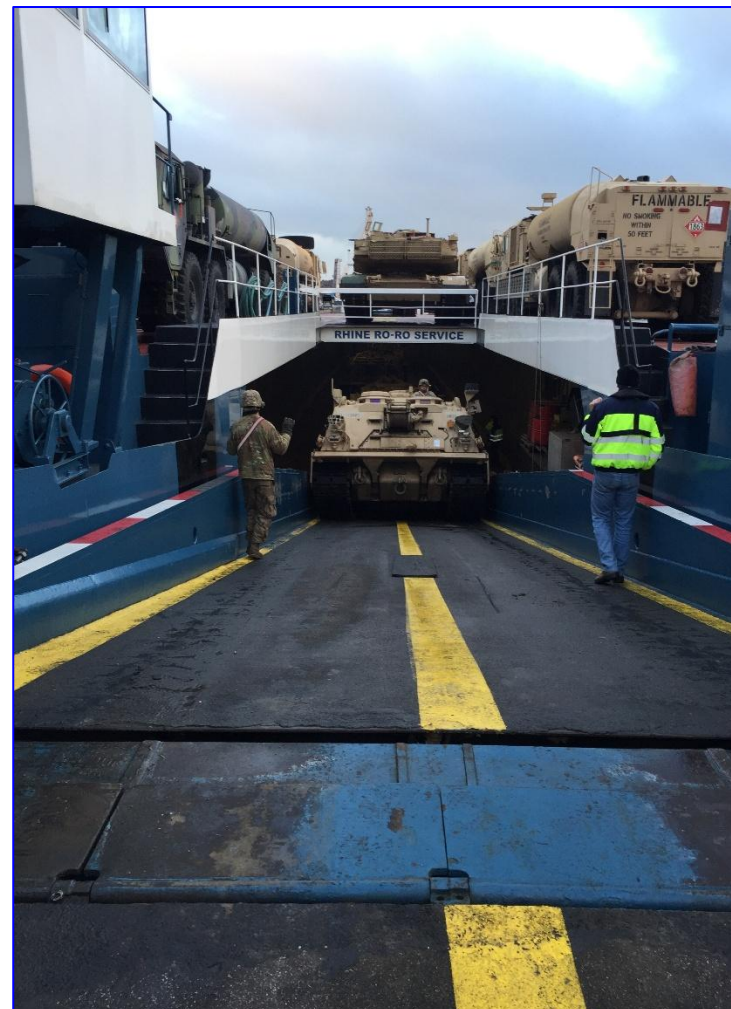
- All types of cargo can be handled
- Single lifts or tandem lifts
- Crane capacity: up to 150t
- All types of lift- and rolling gear available



Inland Waterways

Army Operations RoRo

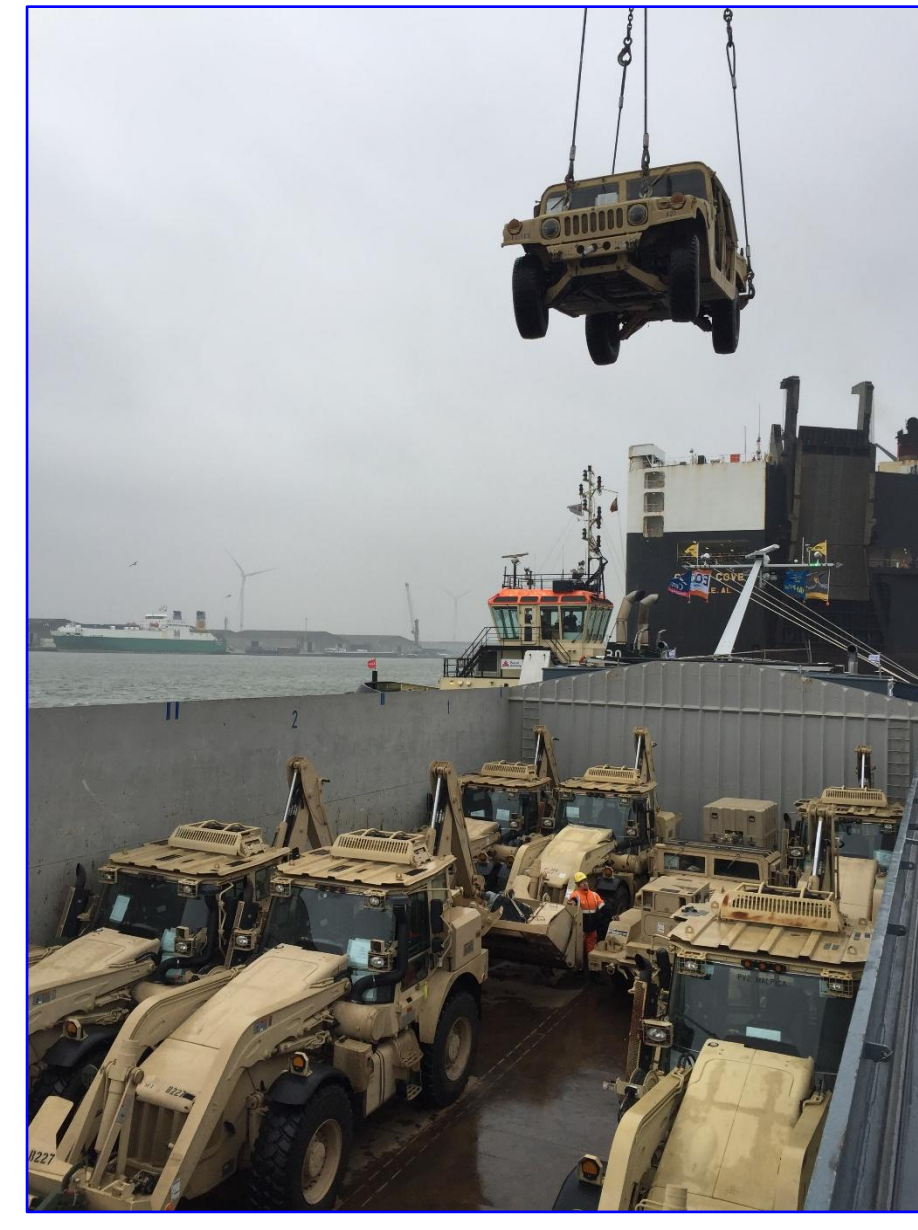
- Units self-propelled: driven on barge
- Units non-propelled: driven on by ICO tugmaster
- Ramp capacities sufficient for heavy armored vehicles
- Average Loading time RoRo-barge: 2 hours



Inland Waterways

Army Operations LoLo

- All types of units can be handled
- Sufficient crane capacity available
- All type of lift gear available
- Average loading time 1 barge: 2 hours





Thank you!